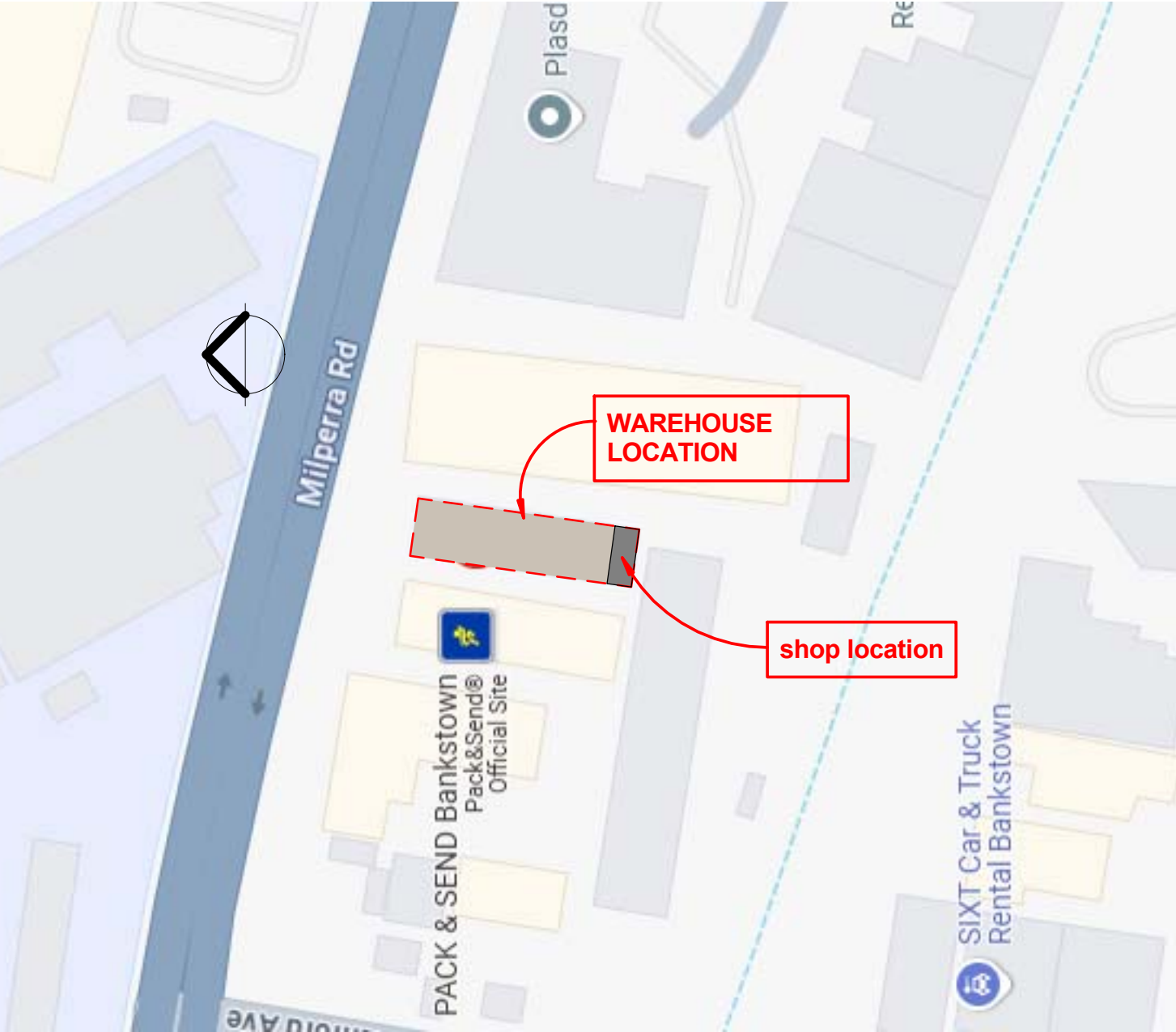


DA LODGEMENT FOR CHANGE OF USE TO CHINESE SAUSAGE MANUFACTURER AT SHOP 8/254 MILPERRA RD MILPERRA



VIEW LOOKING DRIVEWAY



VIEW LOOKING TO SUBJECT SHOP

LOCATION PLAN

NTS



VIEW LOOKING FROM STREET

Sheet List	
Sheet Number	Sheet Name
DA100	LOCATION PLAN / / GENERAL SPECIFICATION
DA101	LOCATION/SITE PLAN
DA102	STRATA PLAN
DA103	EXISTING FLOOR PLAN / PROPOSED FLOOR PLAN
DA104	INTERNAL ELEVATIONS AND SECTION
DA105	SEDIMENT AND EROSION CONTROL PLAN
DA106	COVING LAYOUT

SITE DETAIL

SITE AREA:	3755m ² (APPROX.)
SHOP AREA :	98.4 m ² (APPROX.)
SHOP NO.: 8	SP:68667
NO. OF PARKING SPACE:	1

COMPLIANCE SPECIFICATION NEW WORKS ONLY
SHOP NO 8/254 MILPERRA RD MILPERRA

Building element	Standard of Design & Installation
Fire Safety	BCA E2.2, Spec E2.2a & AS1670.12004
Automatic fire detection & alarm system	BCA E1.5, Spec E1.5 & AS2118.11999
Automatic fire suppression system	BCA E4.2, E4.4 & AS/NZS2293.12005,
Emergency lighting	BCA E4.9 & AS1670.42004, AS4428.42004
EWIS	BCA E4.5, E4.6, E4.8, AS/NZS2293.12005
Exit signs	AS24442004
Fire Blanket	BCA Spec C3.4 & AS1905.12005
Fire doors	BCA E1.3 & AS2419.12005
Fire hydrant systems	BCA C3.15
Fire stopping	BCA E1.4 & AS24412005
Hose reel system	BCA E2.2, Spec E2.2b & AS/NZS1668.11998
Mechanical air handling system	BCA E1.6 & AS24442004
Portable fire extinguishers	
Services	
Artificial lighting	BCA Clause F4.4, J6.2, J6.3 & AS16801998
Electrical installation	AS3000 – 2000
Hydraulics	AS/NZS 3500
Mechanical air handling systems	BCA Clauses F4.5, J5 & AS1668.21991
Building Components	
Balustrades	BCA Clause D2.16
Construction of sanitary Compartments	BCA F2.5
Fire hazard properties of materials	BCA C1.10 & C1.10a
Glass in buildings	BCA Clause B1.4, C2.5 & Spec C3.4, AS12881994
Goings & Risers	BCA Clause D2.13
Handrails	BCA Clause D2.17
Landings	BCA Clause D2.14
Operation of Latch	BCA Clause D2.21
Waterproofing of wet areas	BCA Clause F1.7 & AS 37402004
Access	
Access	BCA Clause D3.2 & D3.3, AS1428.12001
Accessible facilities	BCA F2.4 & AS1428.12001
Tactile Ground Surface Indicators	BCA Clause D3.8 & AS1428.41992
Circulation space around doorways	BCA & AS1428.12001

GENERAL NOTES:
-ALL DIMENSION ARE TO BE CHECKED ON
ON SITE PRIOR TO ANY WORK COMMENCEMENT.
-DO NOT SCALE DRAWINGS - REFER TO FIGURED DIMENSIONS ONLY. ANY
DISCREPANCIES SHALL IMMEDIATELY BE REFERRED TO THE

Client: KIND DO CHINESE SAUSAGE
MANUFACTURER

Sheet Name
LOCATION PLAN / / GENERAL
SPECIFICATION

Project no. 250620
Status DA LODGEMENT

Project name
DA LODGEMENT FOR CHANGE OF USE TO

Scale As indicated

Drawing No. [Revision]

SPACES DESIGN

E: THAIQNGUYEN@HOTMAIL.COM
MOB: 0415 363 853



DP 5 3 9 8 3 8

CP

(0.135)

(0.135)

(2.895)

(0.96)

(0.955)

(0.94)

(0.92)

(2.85)

(2.85)

(19.74)

(1.19 E.MT)

(2.85)

(2.82)

(1.285 E.MT)

(1.175)

(2.755)

(0.83)

(0.84)

(0.86)

(2.82)

(2.82)

(2.82)

(2.82)

(2.82)

(2.82)

(2.82)

(2.82)

(2.82)

(2.82)

(2.82)

(2.82)

(2.82)

(2.82)

(2.82)

(2.82)

(2.82)

(2.82)

(2.82)

(2.82)

(2.82)

(2.82)

(2.82)

(2.82)

(2.82)

(2.82)

(2.82)

(2.82)

(2.82)

(2.82)

(2.82)

(2.82)

(2.82)

(2.82)

(2.82)

(2.82)

(2.82)

(2.82)

(2.82)

(2.82)

(2.82)

(2.82)

(2.82)

(2.82)

(2.82)

(2.82)

(2.82)

(2.82)

(2.82)

(2.82)

(2.82)

(2.82)

(2.82)

(2.82)

(2.82)

(2.82)

(2.82)

(2.82)

(2.82)

(2.82)

(2.82)

(2.82)

(2.82)

(2.82)

(2.82)

(2.82)

(2.82)

(2.82)

(2.82)

(2.82)

(2.82)

(2.82)

(2.82)

(2.82)

(2.82)

(2.82)

(2.82)

(2.82)

(2.82)

(2.82)

(2.82)

(2.82)

(2.82)

(2.82)

(2.82)

(2.82)

(2.82)

(2.82)

(2.82)

(2.82)

(2.82)

(2.82)

(2.82)

(2.82)

(2.82)

(2.82)

(2.82)

(2.82)

(2.82)

(2.82)

(2.82)

(2.82)

(2.82)

(2.82)

(2.82)

(2.82)

(2.82)

(2.82)

(2.82)

(2.82)

(2.82)

(2.82)

(2.82)

(2.82)

(2.82)

(2.82)

(2.82)

(2.82)

(2.82)

(2.82)

(2.82)

(2.82)

(2.82)

(2.82)

(2.82)

(2.82)

(2.82)

(2.82)

(2.82)

(2.82)

(2.82)

(2.82)

(2.82)

(2.82)

(2.82)

(2.82)

(2.82)

(2.82)

(2.82)

(2.82)

(2.82)

(2.82)

(2.82)

(2.82)

(2.82)

(2.82)

(2.82)

(2.82)

(2.82)

(2.82)

(2.82)

(2.82)

(2.82)

(2.82)

(2.82)

(2.82)

(2.82)

(2.82)

(2.82)

(2.82)

(2.82)

(2.82)

(2.82)

(2.82)

(2.82)

(2.82)

(2.82)

(2.82)

(2.82)

(2.82)

(2.82)

(2.82)

(2.82)

(2.82)

(2.82)

(2.82)

(2.82)

(2.82)

(2.82)

(2.82)

(2.82)

(2.82)

(2.82)

(2.82)

(2.82)

(2.82)

(2.82)

(2.82)

(2.82)

(2.82)

(2.82)

(2.82)

(2.82)

(2.82)

(2.82)

(2.82)

(2.82)

(2.82)

(2.82)

(2.82)

(2.82)

(2.82)

(2.82)

(2.82)

(2.82)

(2.82)

(2.82)

(2.82)

(2.82)

(2.82)

(2.82)

(2.82)

(2.82)

(2.82)

(2.82)

(2.82)

(2.82)

(2.82)

(2.82)

(2.82)

(2.82)

(2.82)

(2.82)

(2.82)

(2.82)

(2.82)

(2.82)

(2.82)

(2.82)

(2.82)

(2.82)

(2.82)

(2.82)

(2.82)

(2.82)

(2.82)

(2.82)

(2.82)

(2.82)

(2.82)

(2.82)

(2.82)

(2.82)

(2.82)

(2.82)

(2.82)

(2.82)

(2.82)

(2.82)

(2.82)

(2.82)

(2.82)

(2.82)

(2.82)

(2.82)

(2.82)

(2.82)

(2.82)

(2.82)

(2.82)

(2.82)

(2.82)

(2.82)

(2.82)

(2.82)

(2.82)

(2.82)

(2.82)

(2.82)

(2.82)

(2.82)

(2.82)

(2.82)

(2.82)

(2.82)

(2.82)

(2.82)

(2.82)

(2.82)

(2.82)

(2.82)

(2.82)

(2.82)

(2.82)

(2.82)

(2.82)



GENERAL NOTES:
 -ALL DIMENSION ARE TO BE CHECKED ON
 ON SITE PRIOR TO ANY WORK COMMENCEMENT.
 -DO NOT SCALE DRAWINGS - REFER TO FIGURED DIMENSIONS ONLY. ANY
 DISCREPANCIES SHALL IMMEDIATELY BE REFERRED TO THE

Client: KIND DO CHINESE SAUSAGE
 MANUFACTURER

Project name
 DA LODGEMENT

Sheet Name
 STRATA PLAN

Scale
 1 : 250

Project no.
 250620

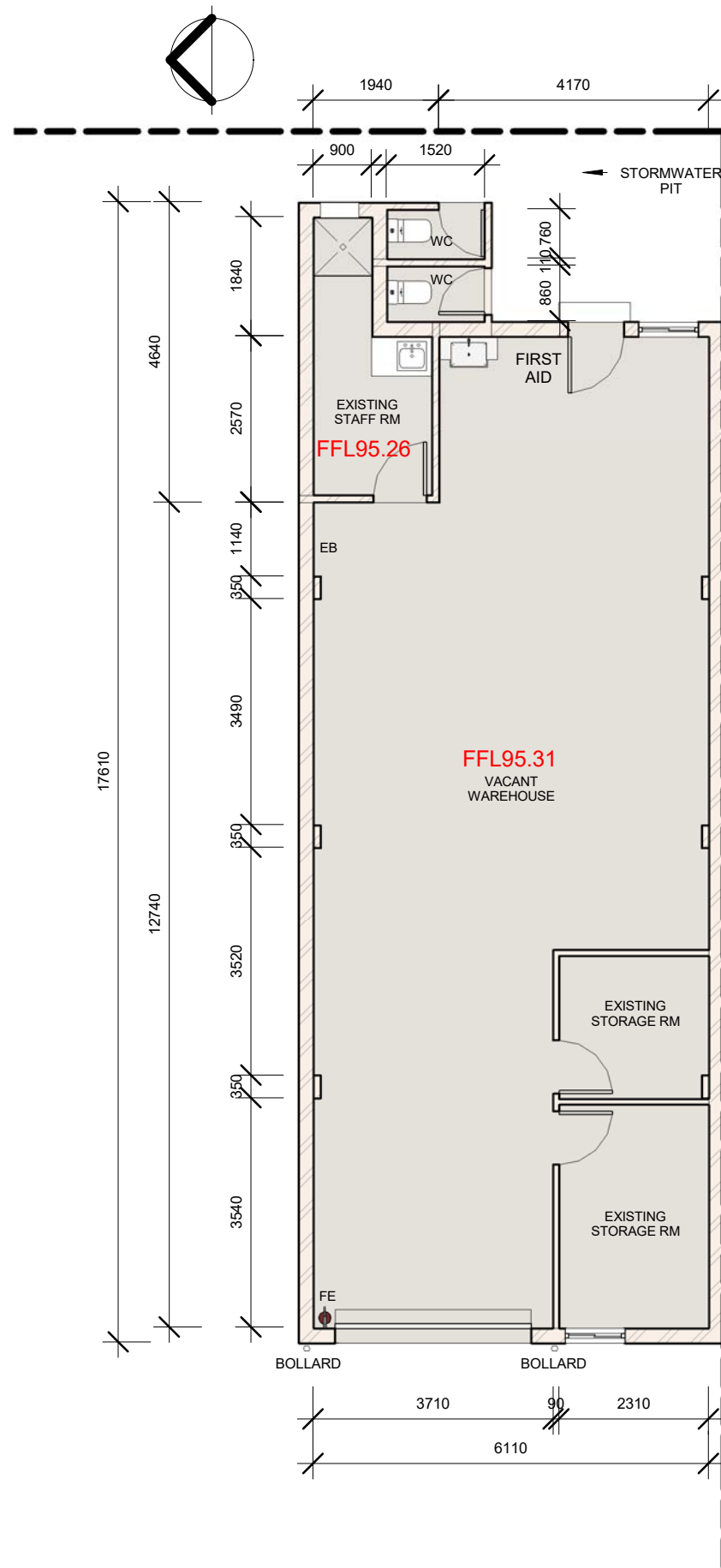
Status
 DA LODGEMENT

Drawing No.
 [Revision]

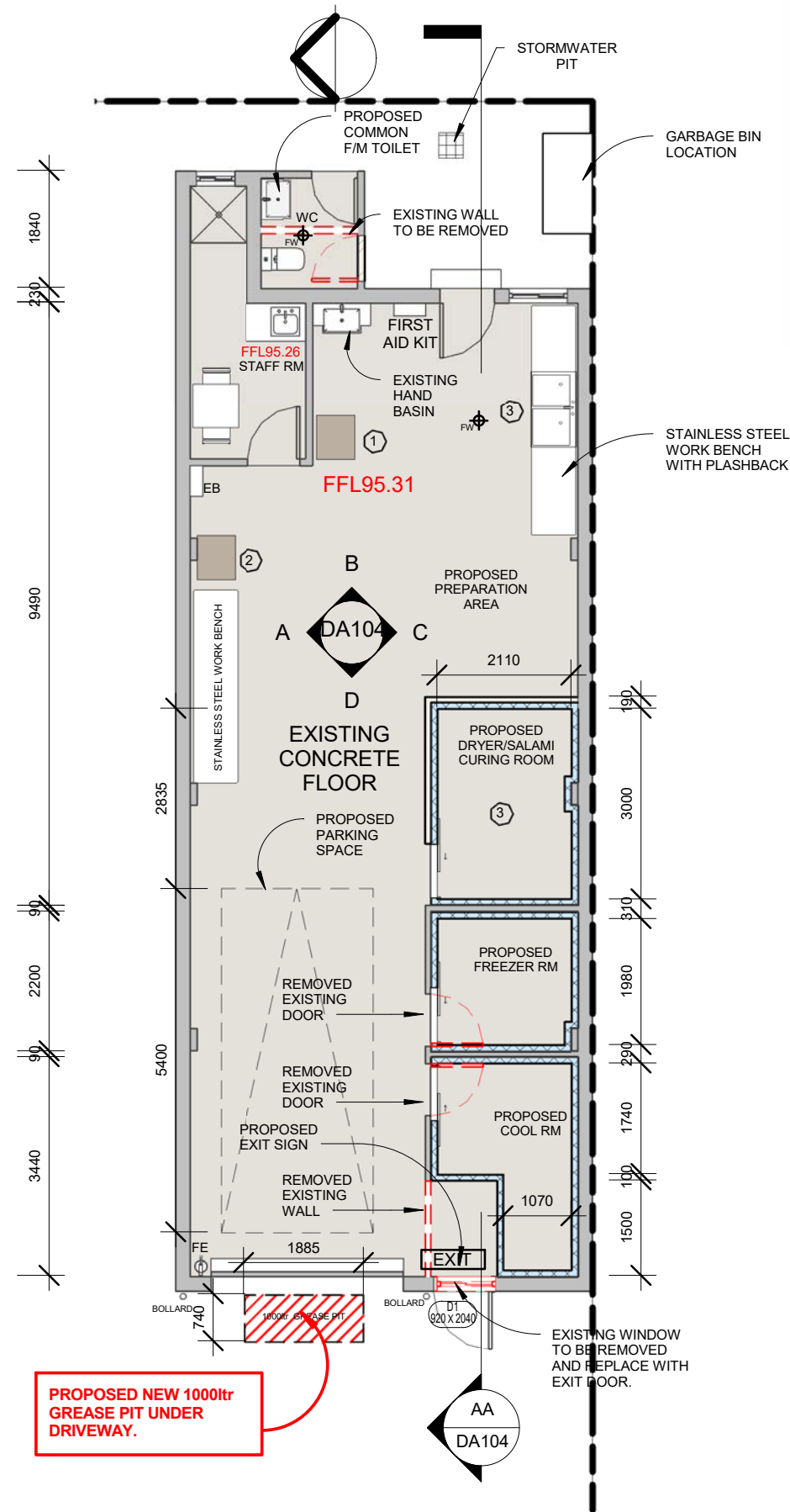
SPACES DESIGN

E: THAIQUYEN@HOTMAIL.COM
 MOB: 0415 363 853





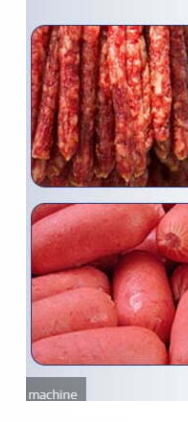
2 02-EXISTING GROUND LV LAYOUT
1 : 100



1 02-PROPOSED NEW LAYOUT
1 : 100



1 MINCE MIXER MACHINE



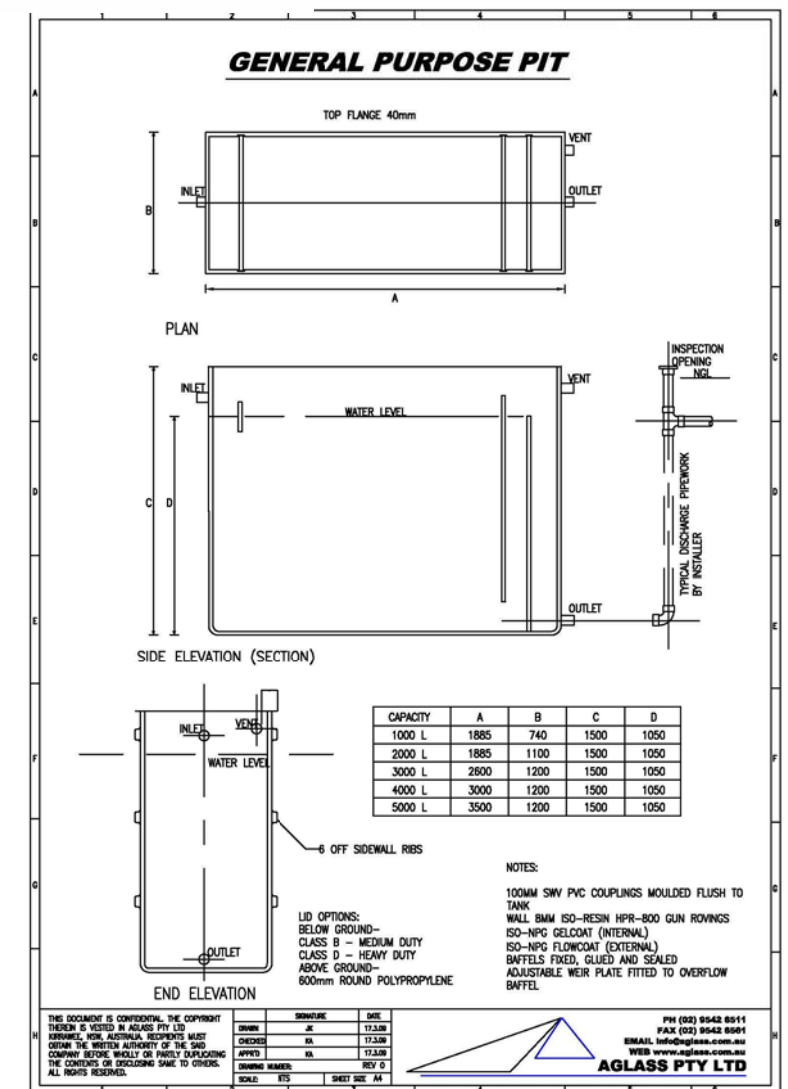
2 SAUSAGE FILLER MACHINE



3 STAINLESS STEEL DOUBLE BOWL SINK



4 DRYER/CURING MACHINE



GENERAL NOTES:
-ALL DIMENSION ARE TO BE CHECKED ON
ON SITE PRIOR TO ANY WORK COMMENCEMENT.
-DO NOT SCALE DRAWINGS - REFER TO FIGURED DIMENSIONS ONLY. ANY
DISCREPANCIES SHALL IMMEDIATELY BE REFERRED TO THE

Client: KIND DO CHINESE SAUSAGE
MANUFACTURER

Sheet Name
EXISTING FLOOR PLAN / PROPOSED
FLOOR PLAN

Project no. 250620
Status DA LODGEMENT

Project name

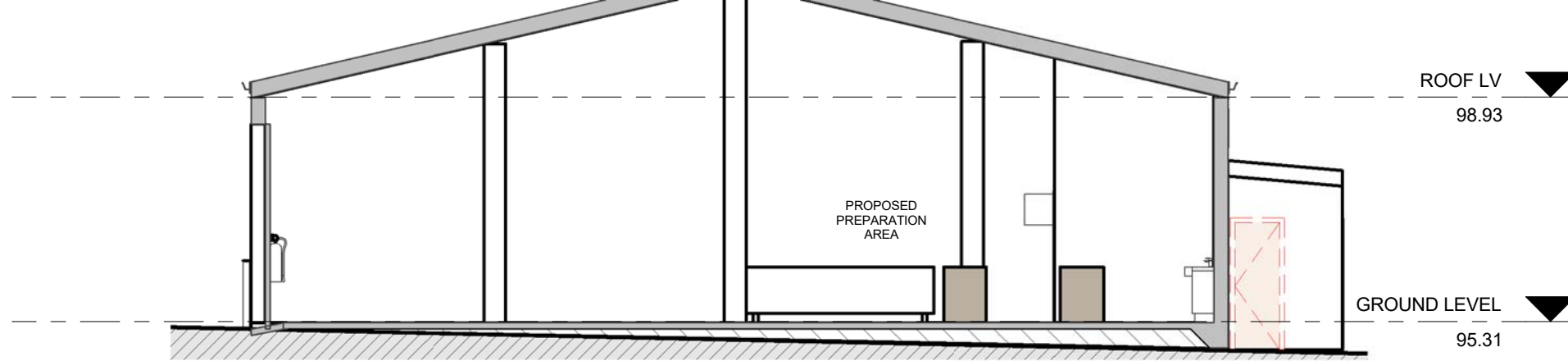
Scale As indicated

Drawing No. [Revision]

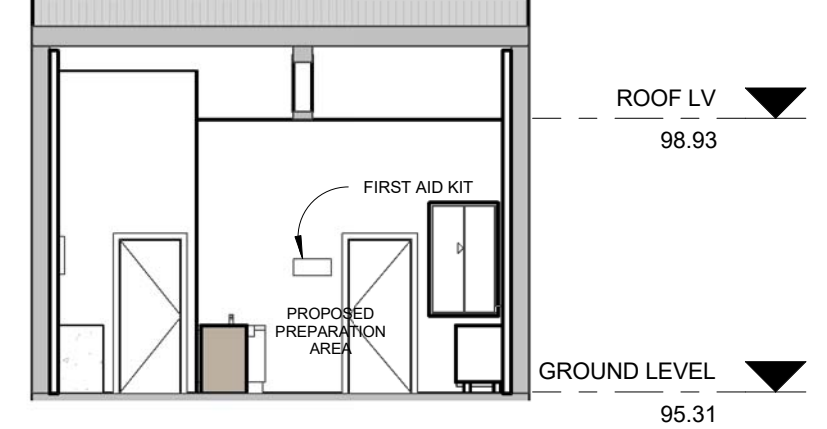
SPACES DESIGN

E: THAIONGUYEN@HOTMAIL.COM
MOB: 0415.363.853

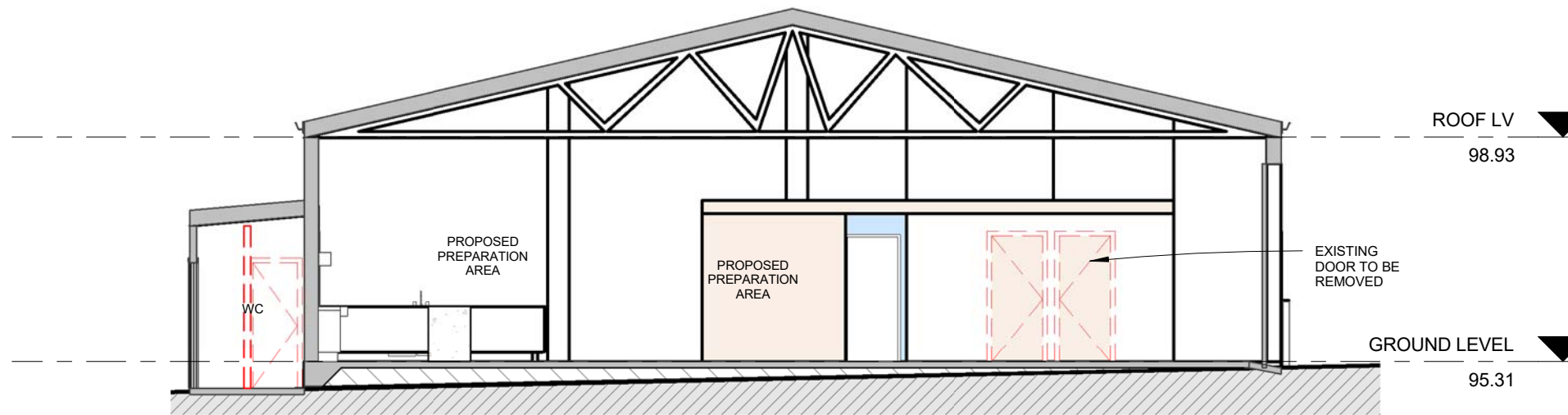




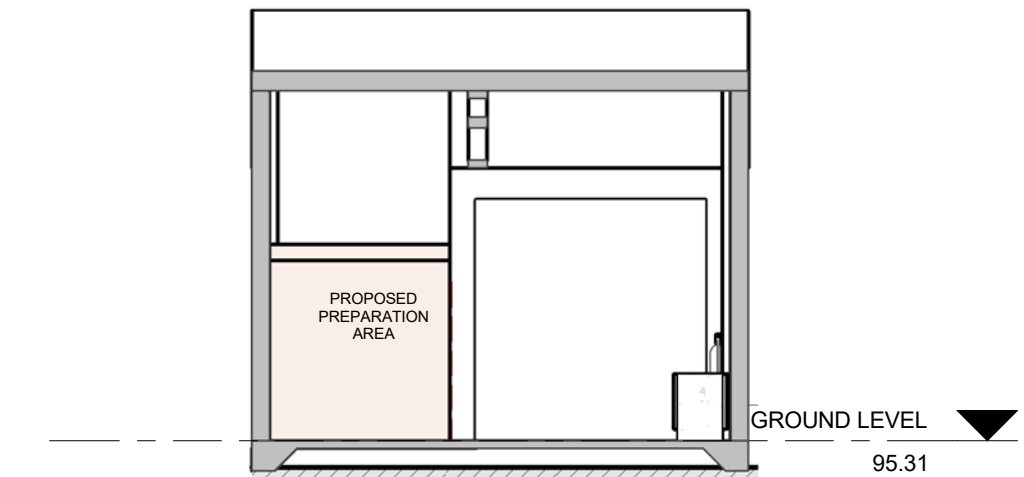
A Elevation 1 - a
1 : 100



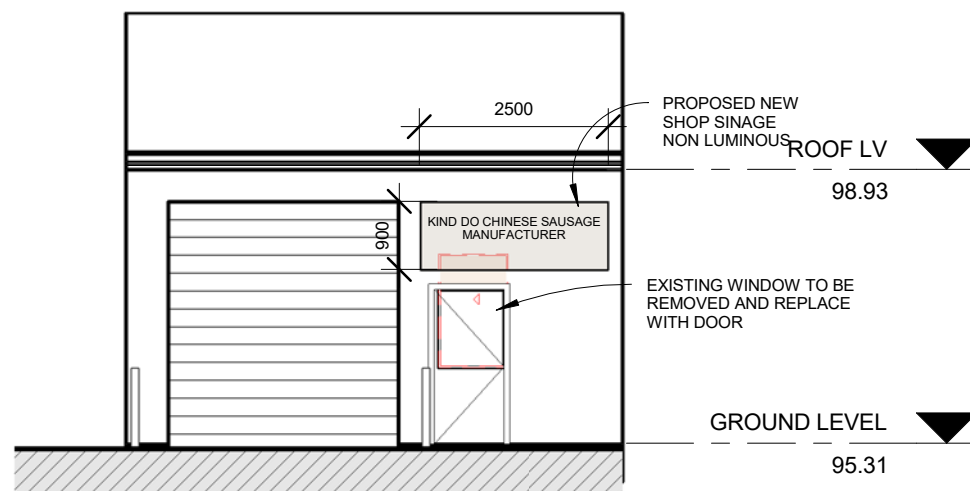
B Elevation 1 - b
1 : 100



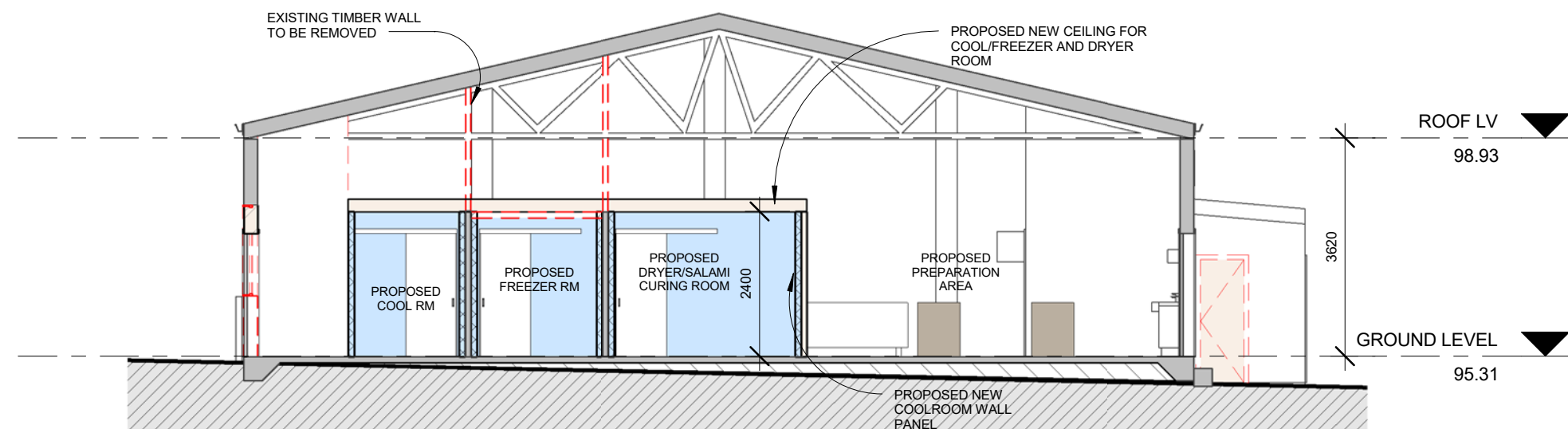
C Elevation 1 - c
1 : 100



D Elevation 1 - d
1 : 100



6 SHOP FRONT ELEVATION
1 : 100



AA SECTION A-A
1 : 100

GENERAL NOTES:
-ALL DIMENSION ARE TO BE CHECKED ON
ON SITE PRIOR TO ANY WORK COMMENCEMENT.
-DO NOT SCALE DRAWINGS - REFER TO FIGURED DIMENSIONS ONLY. ANY
DISCREPANCIES SHALL IMMEDIATELY BE REFERRED TO THE

Client: KIND DO CHINESE SAUSAGE
MANUFACTURER

Project name
DA LODGEMENT FOR CHANGE OF USE TO

Sheet Name
INTERNAL ELEVATIONS AND SECTION

Scale 1 : 100

Project no. 250620

Status DA LODGEMENT

Drawing No. [Revision]

SPACES DESIGN

E: THAIQNGUYEN@HOTMAIL.COM
MOB: 0415.363.853



SUITABLE OF FLOOR FINISHES IN FOOD PREMISES

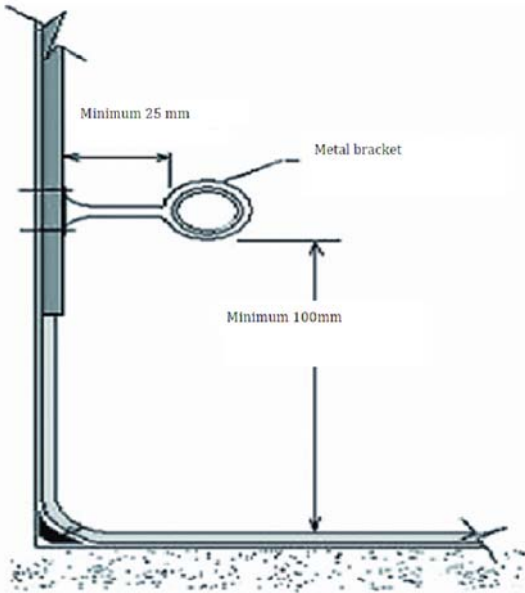
Finish	Water areas	Food preparation	Vegetable preparation	Servary	Store room	Chillers/ freezers	Bin store	Eating areas	Comments
Stainless Steel non-slip	✓	✓	✓	✓	✓	✓	✓	✓	Welded joints
Ceramic tiles	✓	✓	✓	✓	✓	✓	✓	✓	Epoxy grout
Quarry tiles	✓	✓	✓	✓	✓	✓	✓	✓	Sealed
Steel trowel case hardened concrete			✓		✓	✓	✓	✓	Smooth sealed: finish no joints
Carpet/ carpet tiles								✓	
Wooden flooring								✓	Sealed
Poly vinyl sheet	✓	✓	✓	✓	✓	✓	✓	✓	Heat welded joints
Vinyl tiles			✓	✓	✓	✓	✓	✓	
Plastic matting				✓				✓	
Cork tiles								✓	Sealed
Epoxy resin	✓	✓	✓	✓	✓	✓	✓	✓	

SUITABLE OF CEILING IN FOOD PREMISES

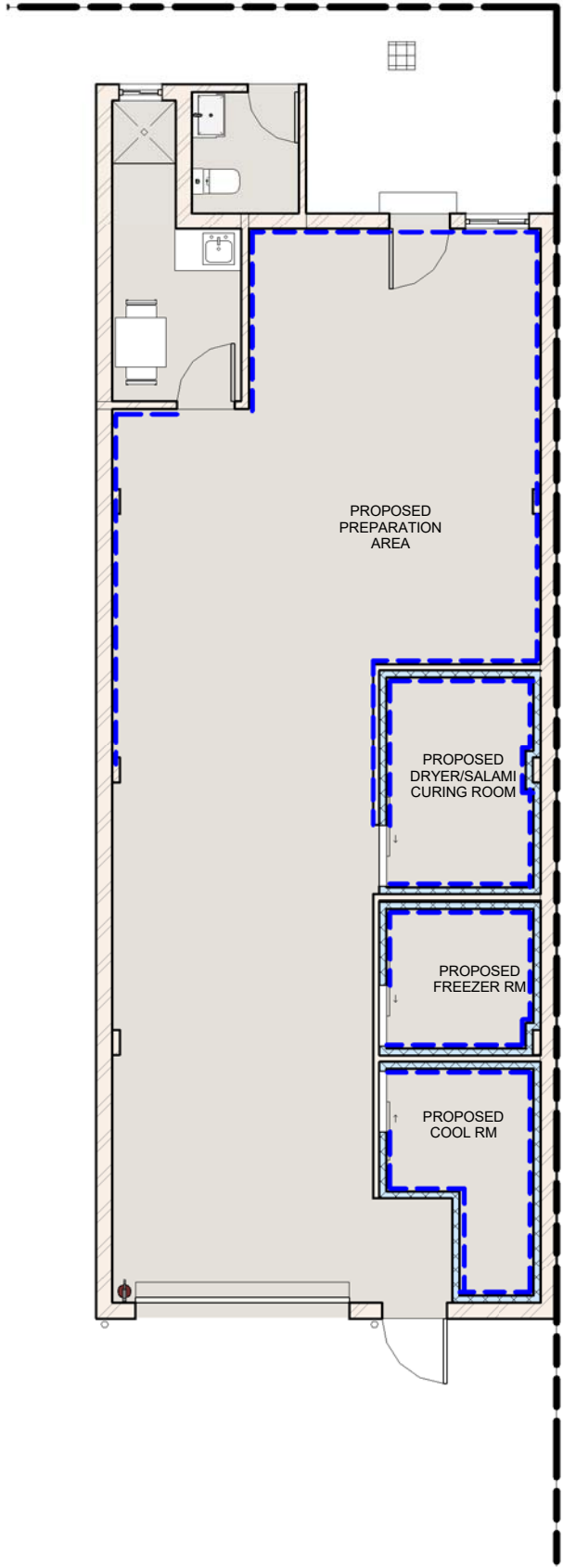
Finish	Wet areas	Vegetable preparation	Servary	Store room	Chillers/ freezers	Bin store	Eating areas	Comments
Painted plaster	✓	✓	✓	✓		✓	✓	Smooth finish
Steel Sheet	✓	✓	✓	✓		✓	✓	
Trowelled cement	✓	✓	✓	✓		✓	✓	Polished surface
Wood panelling							✓	Sealed surfaces
Concrete	✓	✓	✓	✓		✓	✓	Sealed smooth surface
Pre-formed panels	✓	✓	✓	✓		✓	✓	
Acoustic panels							✓	Suspended T-bars
Decorative panels							✓	

SUITABLE OF WALL IN FOOD PREMISES

Finish	Wet washed areas	Food preparation	Vegetable preparation	Servary	Store room	Chillers/ freezers	Bin store	Eating areas	Comments
Stainless Steel	✓	✓	✓	✓	✓	✓	✓	✓	Welded joints Waterproof screw covers
Ceramic tiles	✓	✓	✓	✓	✓	✓	✓	✓	Epoxy grout
Vinyl sheets	✓	✓	✓	✓	✓	✓	✓	✓	Heat welded joints
Painted plaster					✓		✓	✓	Smooth finish
Feature brick								✓	
Aluminium sheet	✓	✓	✓	✓	✓	✓	✓	✓	Welded or sealed joints
Steel Sheet							✓		Welded or sealed joints
Trowelled cement		✓	✓	✓	✓	✓	✓	✓	Polished surface
Wood panelling								✓	Wood sealed
Painted brickwork					✓		✓	✓	Flush joints and solid surfaces
Concrete							✓	✓	Sealed smooth surface
Pre-formed panels	✓	✓	✓	✓	✓	✓	✓	✓	H bars joints mastic sealed. In wet areas/ food preparation shall be integrated into a dwarf wall or set on plinth



CLEARANCE OF PIPES AND CONDUITS DETAIL



1 COVING LAYOUT
1 : 100

GENERAL NOTES:
-ALL DIMENSION ARE TO BE CHECKED ON
ON SITE PRIOR TO ANY WORK COMMENCEMENT.
-DO NOT SCALE DRAWINGS - REFER TO FIGURED DIMENSIONS ONLY. ANY
DISCREPANCIES SHALL IMMEDIATELY BE REFERRED TO THE

